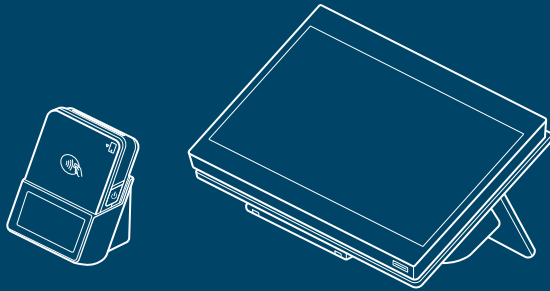
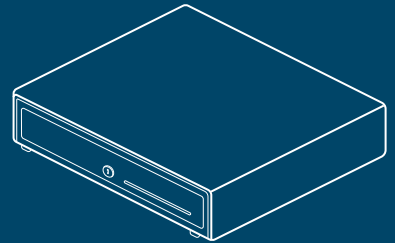


Wix POS

Quick Setup Guide



The Essentials



POS Accessories

Before you start selling, make sure to review the full manufacturer manuals for more instructions and info.

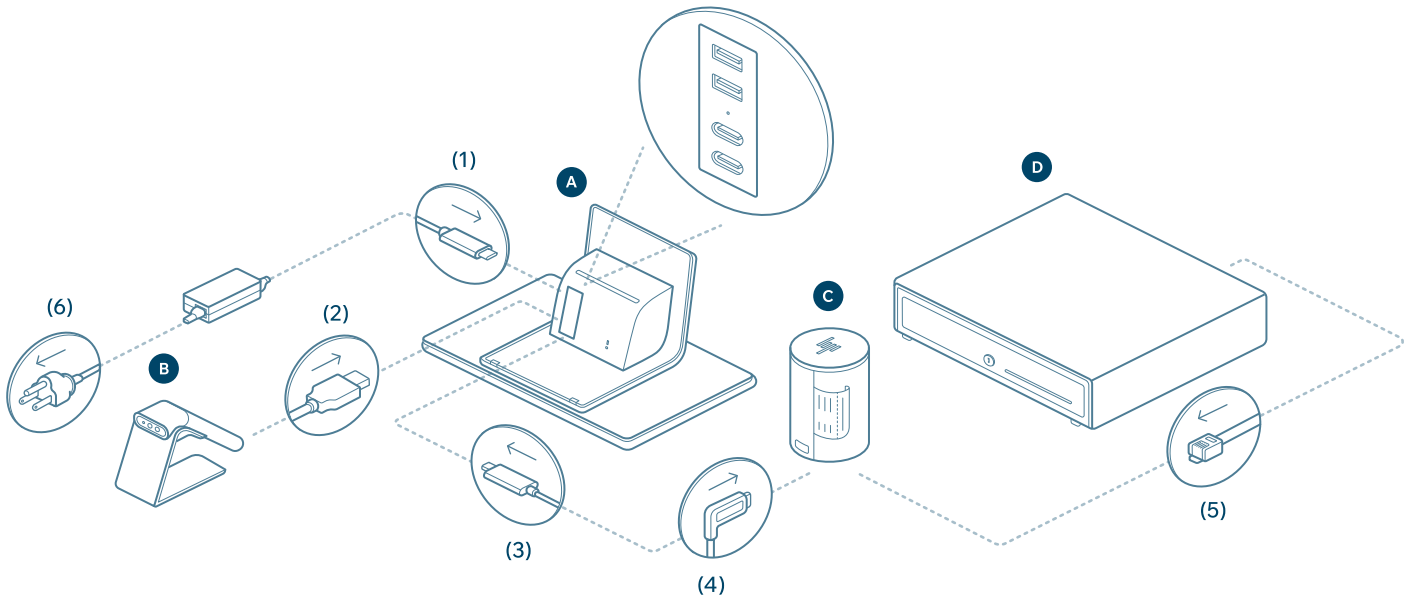
1

Connect your tablet and accessories

- Place the tablet facedown for better access to ports. Then, connect your devices:

- A Tablet:** Power adapter > Tablet USB-C port (1)
 - B Scanner:*** USB cable > Tablet USB-A port (2)
 - C Printer:*** USB cable > Tablet USB-C port (3) and USB cable > Printer USB-C port (4)
 - D Drawer:*** RJ-12 cable > Printer RJ-12 port (5)
- Plug in the tablet's power adapter (6).

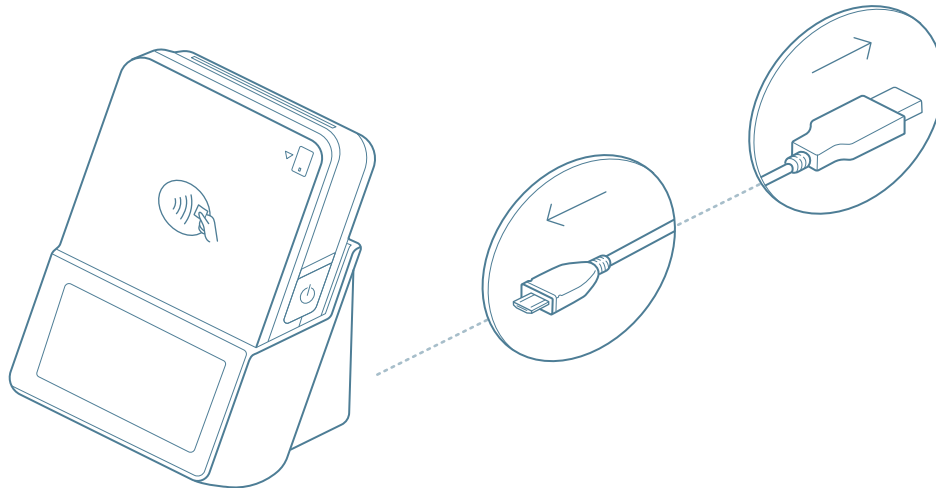
**Included in the Complete POS Package or purchased separately.*



2

Switch on your card reader

- Press the power button until the blue light flashes.
- Use your card reader wirelessly.
- Charge your reader directly or via its cradle when needed.



3

Log in to your Wix account

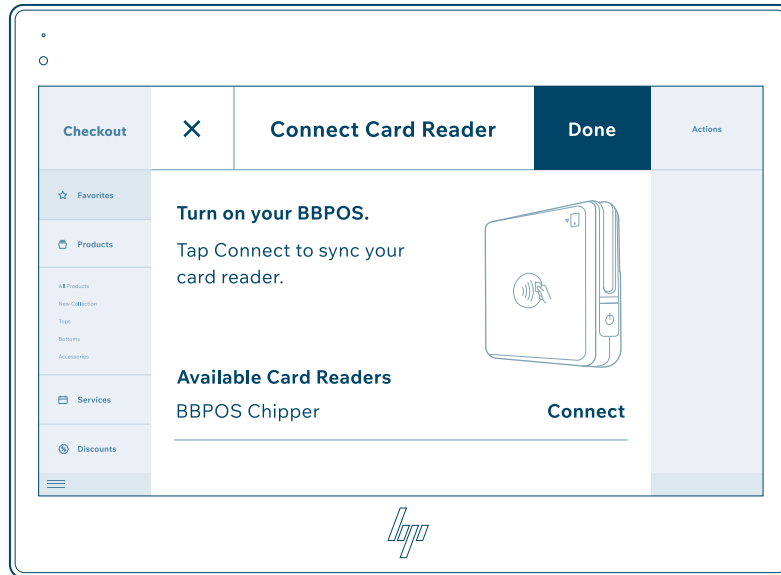
- Hold the tablet power button for 5s until the Wix logo appears.
- Log in to your Wix account.
- Get set to sell with your POS—your product catalog is ready.



4

Sync your devices

- Once logged in, a notification will prompt you to connect your card reader.
- Sync your card reader by tapping Connect on the tablet.
- Your POS accessories sync automatically once plugged in.
- Access your device settings anytime. On your tablet, go to Settings > Manage Hardware.





Scan to learn more.
wix.com/pos

For technical issues, contact Customer Care right from your POS.
On your tablet, go to the bottom-left menu > Help > Contact Us.



1-Year

Hardware Warranty



30-Day

Money-Back Guarantee



24/7

Dedicated Support

Need more help? Ask us anything at postablet@wix.com.